

Re_fashion

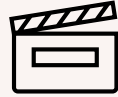
WEBINAR

Recycled Materials Incorporation (RMI) Experiments

March 10, 2026



Information



Replay

The webinar is recorded.
A replay will be available on [Refashion's YouTube](#) channel.



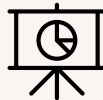
Timing

45-minute presentation followed by 15 minutes of questions and answers.



Questions & Answers

Ask your questions in the Q&A section. We will answer them during the 15 minutes dedicated to this after the presentation.



Support

The presentation will be sent by email after the webinar.

Confidentiality and competition law obligations

This webinar is being held to exchange non-confidential information.

In accordance with competition law, we must not discuss: product purchase and sale prices, production capacities and plans, costs, or any other sensitive commercial information.

Speakers



**Clara
LE MOUËL**

**Recycling
Project
Manager**

Refashion



**Clotilde
MONZO**

**Eco-design
Project
Manager**

Refashion



**Julien
WELGAN**

**Sustainability
Senior Manager**

Deloitte

External contributors



**Caroline
BOTTIN**

Ecotech Leader



**Emmanuel
PRETET**

**Head of Circularity
Design Office**



**Alexia
COUPIER**

**Partnerships and External
Relations Manager**



**Martin
RICHAUD**

Site Director

Agenda

1.

Introduction:
About
Refashion

2.

Focus on the
RMI
Experiments
program

3.

Recycling:
beyond
preconceived
ideas, on-site
proof

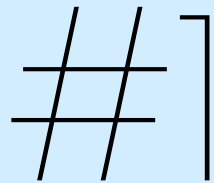
4.

Take part in the
RMI
Experiments
2026

5.

Questions &
Answers

Introduction: About Refashion



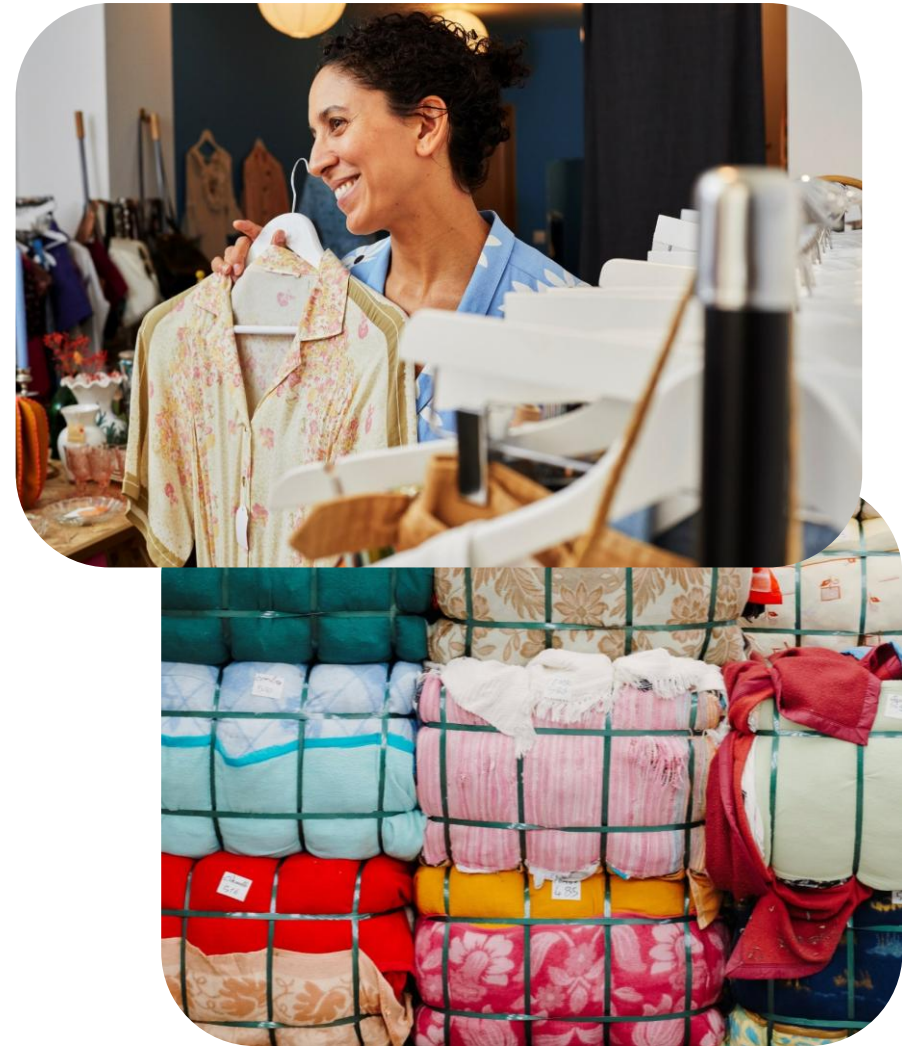
What is Refashion?

- The eco-organization responsible for **clothing, household linen, and footwear** waste in France
- Approved by the public authorities in accordance with a **set of specifications**
- **100% financed by eco-contributions** paid by marketers



Responsible for the **prevention and management of end-of-life products placed on the French market for private individuals**

Eco-design, Repair, Second-hand, Collection, Sorting, Reuse, Recycling



Focus on the RMI (Recycled Materials Incorporation) Experimentations Program

#2



RMI CHALLENGE



No outlets:

*no recycling, no material sovereignty in
France or Europe.*

What are the **objectives** of the RMI experiments?



Develop the demand for recycled raw materials in new products in closed and open loops.



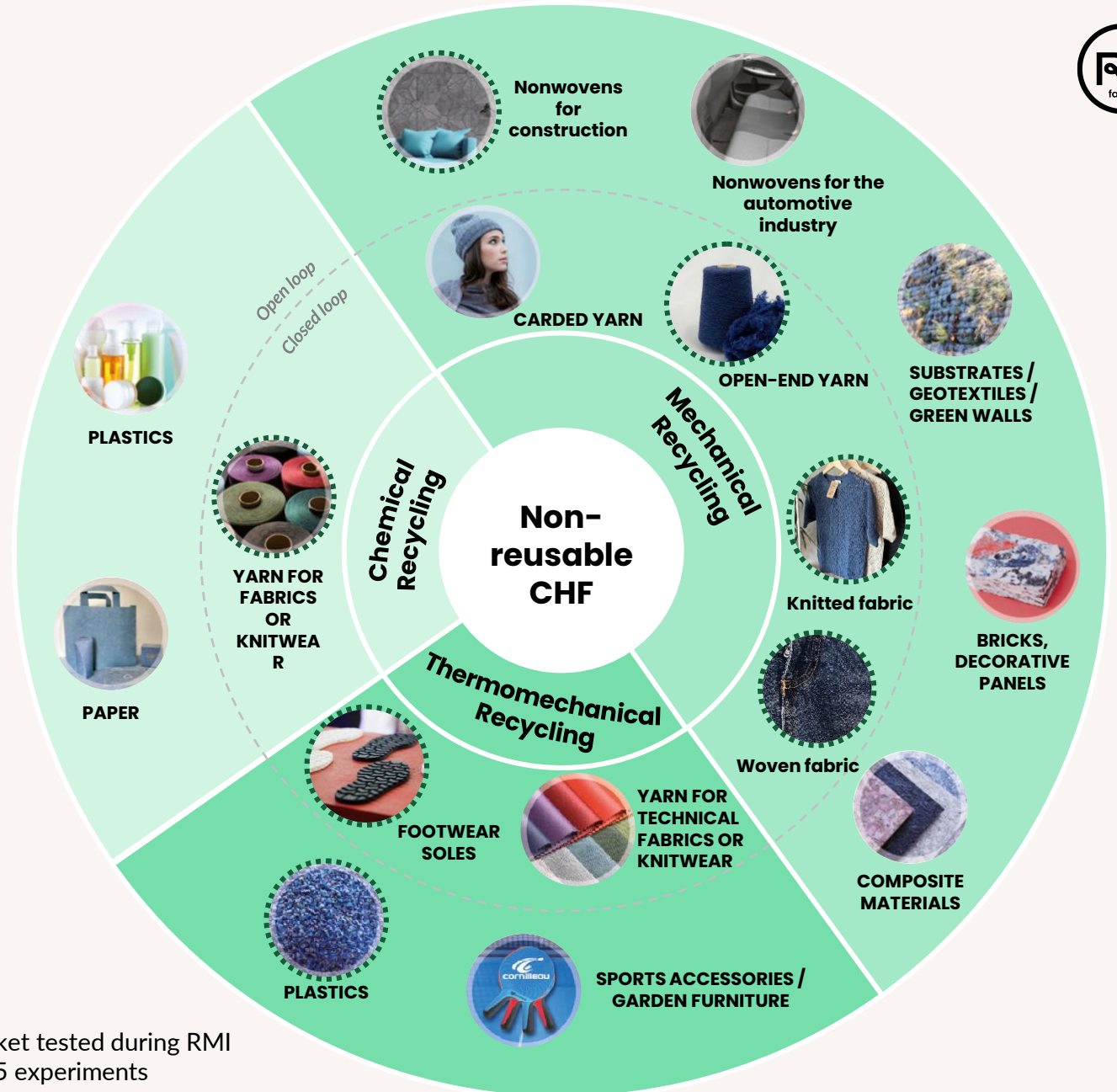
To create synergies between French and European stakeholders in order to develop **local value chains**.



To enable stakeholders to **assess the technical and financial feasibility** of producing and marketing a product containing recycled materials from French CHF sources.

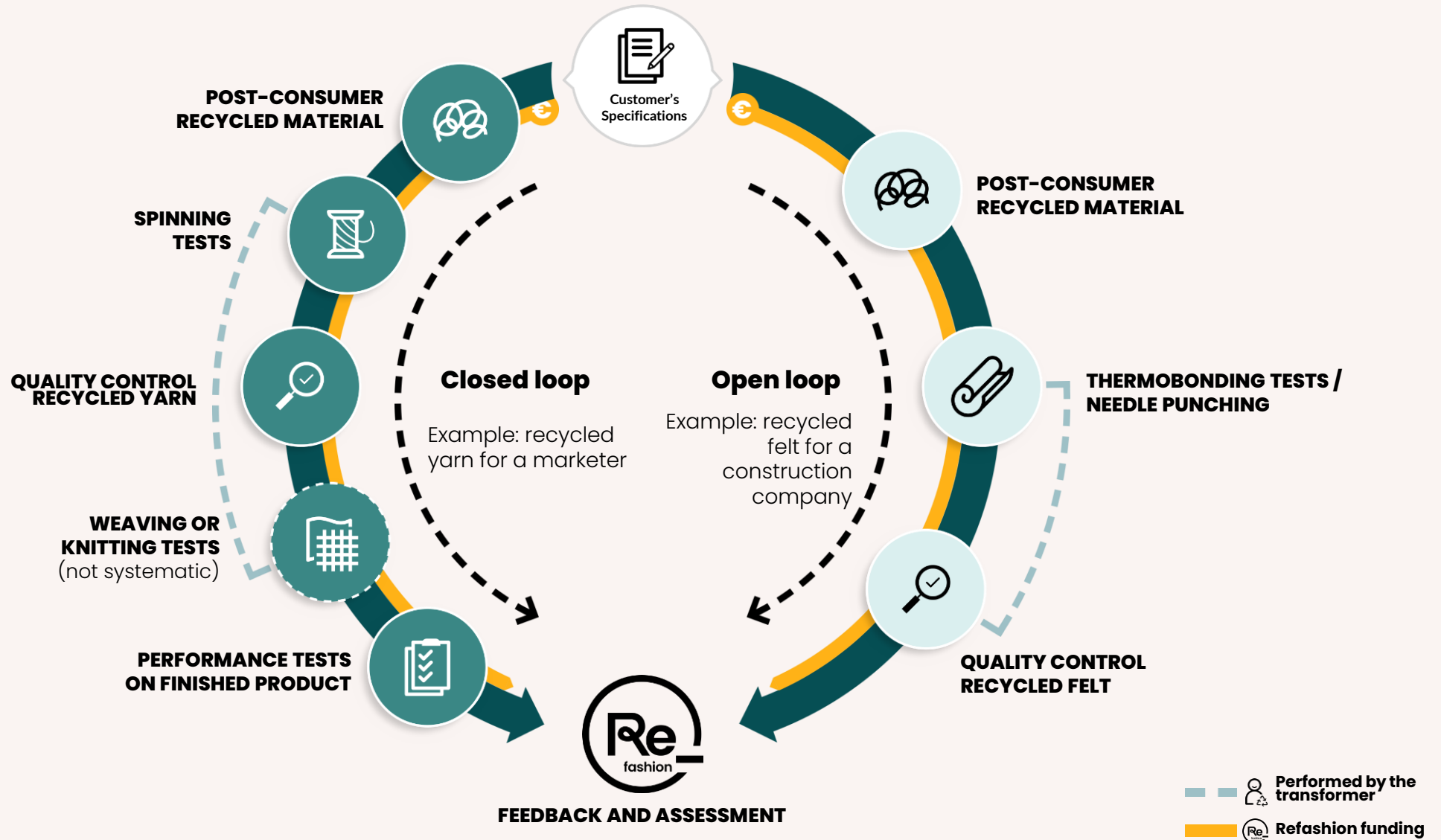
Make circularity a market opportunity for brands, distributors, and manufacturers rather than a constraint.

Examples of possible applications for RMI experiments



Market tested during RMI 2025 experiments

How does an RMI experiment work?



What are the **key figures** for the RMI 2025 experiments?

12

experiments of Recycled Materials Incorporation in 2025
including 9 closed-loop

15

Customers
including 13 CHF marketers

242 tons

of used, non-reusable CHF processed

+3.5kt

of non-reusable used CHF treated per year in the long term

33

finished products tested
as part of the program
(yarns, fabrics, knits, soles, pallets, and insulation panels)

7





materials tested
(cotton, polyester, EVA, rubber, acrylic, polyamide, PVC)

Which stakeholders participated in the RMI 2025 experiments?



59 stakeholders



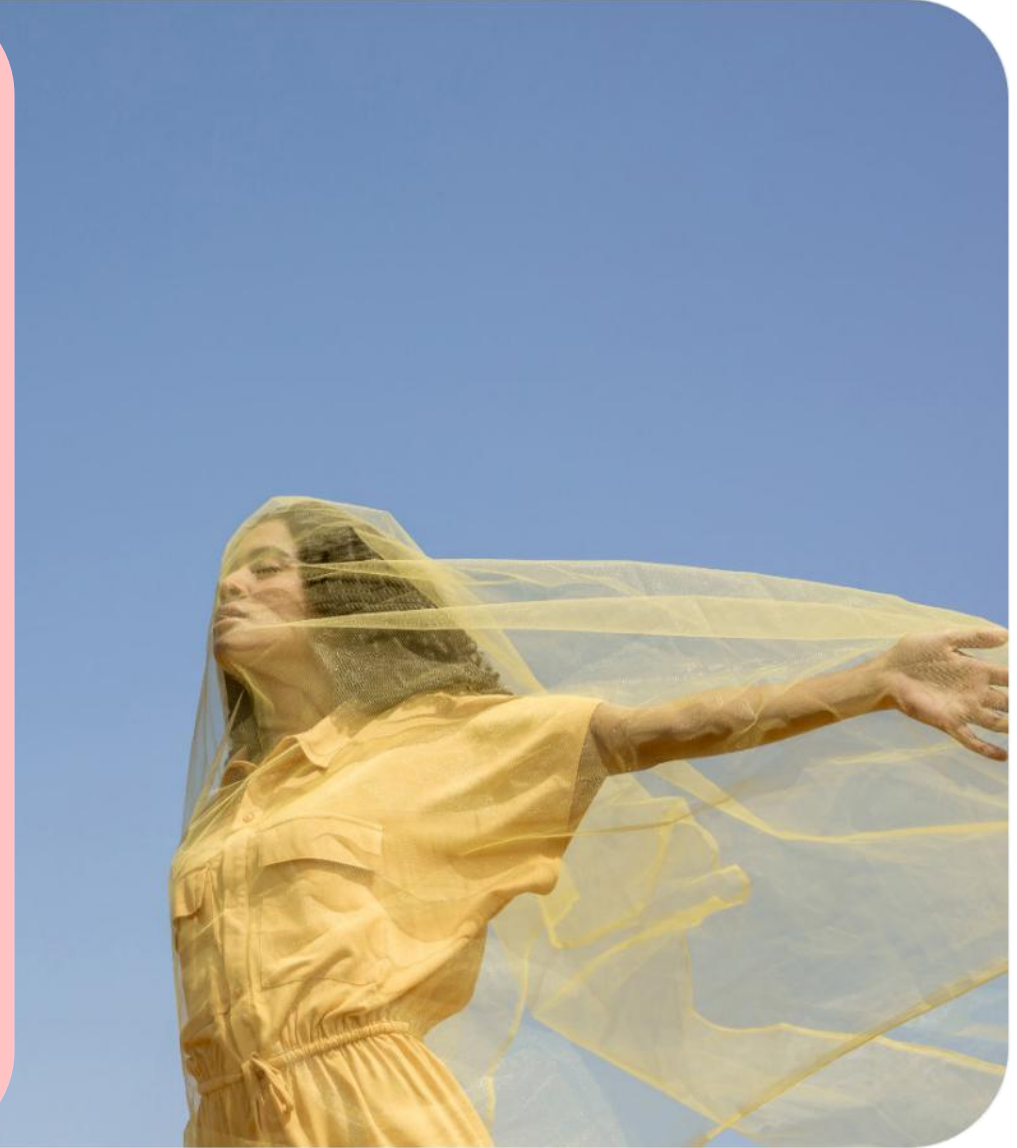
-  Material sorting and preparation operators
-  Closed-loop manufacturer
-  Customer
-  Open-loop manufacturer

Customers



Recycling: beyond preconceived notions, on-site proof

#3



"Using recycled materials stifles creativity."



TISSAGES
de Charlieu

X

KIABI



Objective: To produce fabrics on demand from post-consumer textiles



Post-consumer CHF treated

Jeans, pants, T-shirts, and polo shirts rich in cotton



Fabrics to be produced

5 polycotton fabrics made from 9 colored yarns



Incorporation rate

10 to 20% in fabrics



Application and performance tests

- Color fastness
- Pilling
- Dimensional stability



Finished products

- Foutas and bags available in two models,
- Jeans in one color



"There is no European industrial ecosystem for textile recycling."



X



Objective: To produce fabrics on demand from post-consumer textiles



Post-consumer CHF treated

Jeans, pants, T-shirts, and polo shirts rich in cotton



Fabrics to be produced

5 polycotton fabrics from 9 colored yarns



Incorporation rate

10 to 20% in fabrics



Application and performance tests

- Color fastness
- Pilling
- Dimensional stability



Finished products

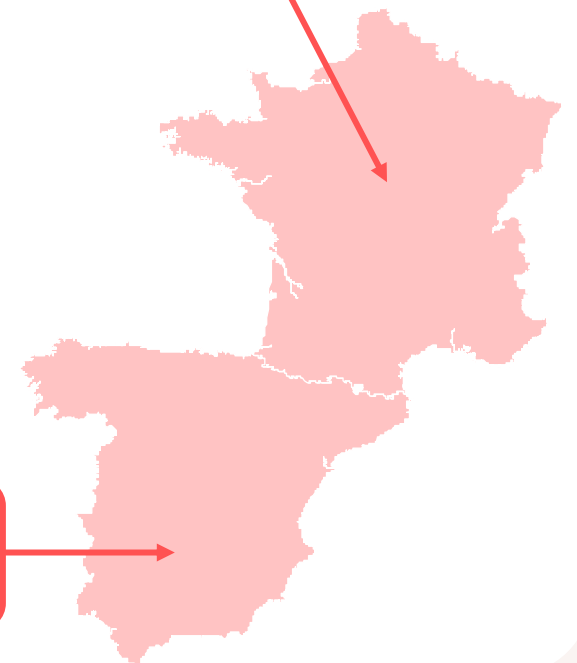
- Foutas and bags available in two models,
- Jeans in one color

10 French actors

- 4 operators
- 2 weavers
- 2 finishers
- 2 textile laboratories

3 Spanish actors

- 1 recycler
- 2 spinners



"Recycled materials are still *second-choice* products."

Products made from recycled materials are subject to the same quality requirements.



X



	Objective: To manufacture a denim fabric made from 100% French cotton containing post-consumer textiles.
	Post-consumer CHF treated Jeans/denim pants without elastane
	Fabrics to be produced 2 or 3 fabric qualities
	Incorporation rate Approximately 16% in fabrics
	Application and performance tests <ul style="list-style-type: none"> • Tear resistance • Tensile strength • Pilling • Abrasion resistance
	Finished products Denim clothing (pants, overalls, etc.)



"Recycled materials are not ready for industrialization."

Nouvelles
Fibres Textiles

X

SOPREMA



Objective: To manufacture thermal and acoustic insulation panels containing post-consumer polycotton textiles, replacing 100% cotton production scraps



Post-consumer CHF treated

Jeans, T-shirts, pants, shirts, and bedding rich in cotton and/or polyester



Incorporation rate

10 to 20 %



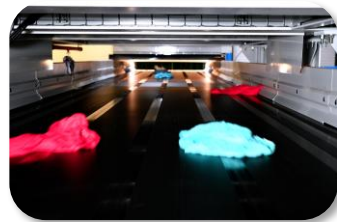
Application and performance tests

- Density
- Thermal conductivity
- Dust rate
- Semi-rigidity



Finished products

500 tons of thermal and acoustic insulation panels for the building industry



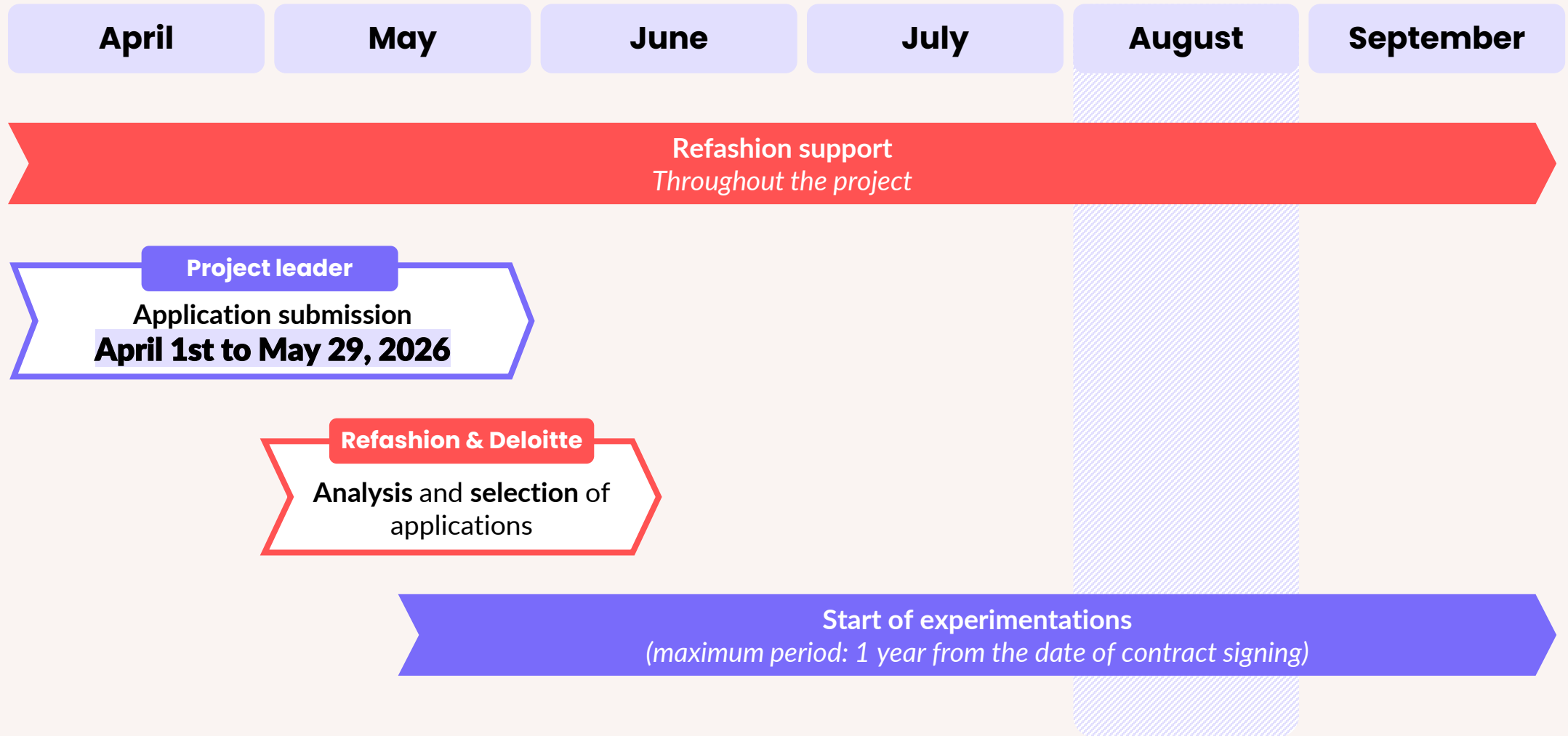
Take part in the RMI 2026 Experiments

#4










RMI 2026 Experiment Schedule



What are the **eligibility requirements**?

Project

-  Use of non-reusable post-consumer French CHF
-  Maximum duration of 12 months
-  Identification of sources, volumes, and customers
-  Projection of potential volume processed over a 3-year period
-  Proposal for a reincorporation solution applicable in France or Europe

Project leader

-  Be the leader of a single project
-  Industrial capacity for processing or reincorporation of non-reusable household CHF collected in France
-  Involvement in at least one stage of the value chain
-  Up-to-date declarations and other commitments with the eco-organization
-  Membership of the platform

Recycle
Re_fashion

Refer to **the RMI Experiments rules** for all conditions

What expenses are eligible?

100% of eligible expenses can be financed by Refashion

Eligible expenses



- Purchase of recycled materials
- Preparation and recycling
- Processing and incorporation tests
- Application and compliance testing
- Transport
- Personnel expenses up to 10% of the project budget
- ...

Ineligible expenses



- Collection and sorting if carried out by non-approved sorting operators
- Manufacturing
- Certifications
- Reach testing
- Equipment and materials
- Overhead costs
- Industrial property costs
- ...

Please refer to **the RMI experiments rules** for all conditions.

How to apply?



Applications must be submitted
on the dedicated platform
[Refashion-espace-projets.agorize.com](https://refashion-espace-projets.agorize.com)

between April 1st, 2026
and May 29, 2026

If you have any questions, please
contact:
experimentations@refashion.fr



Read the rules available on the application platform

I am completing my application:



Form and free-form application



Specifications for the finished product



Provisional project schedule



Financial evaluation of the project

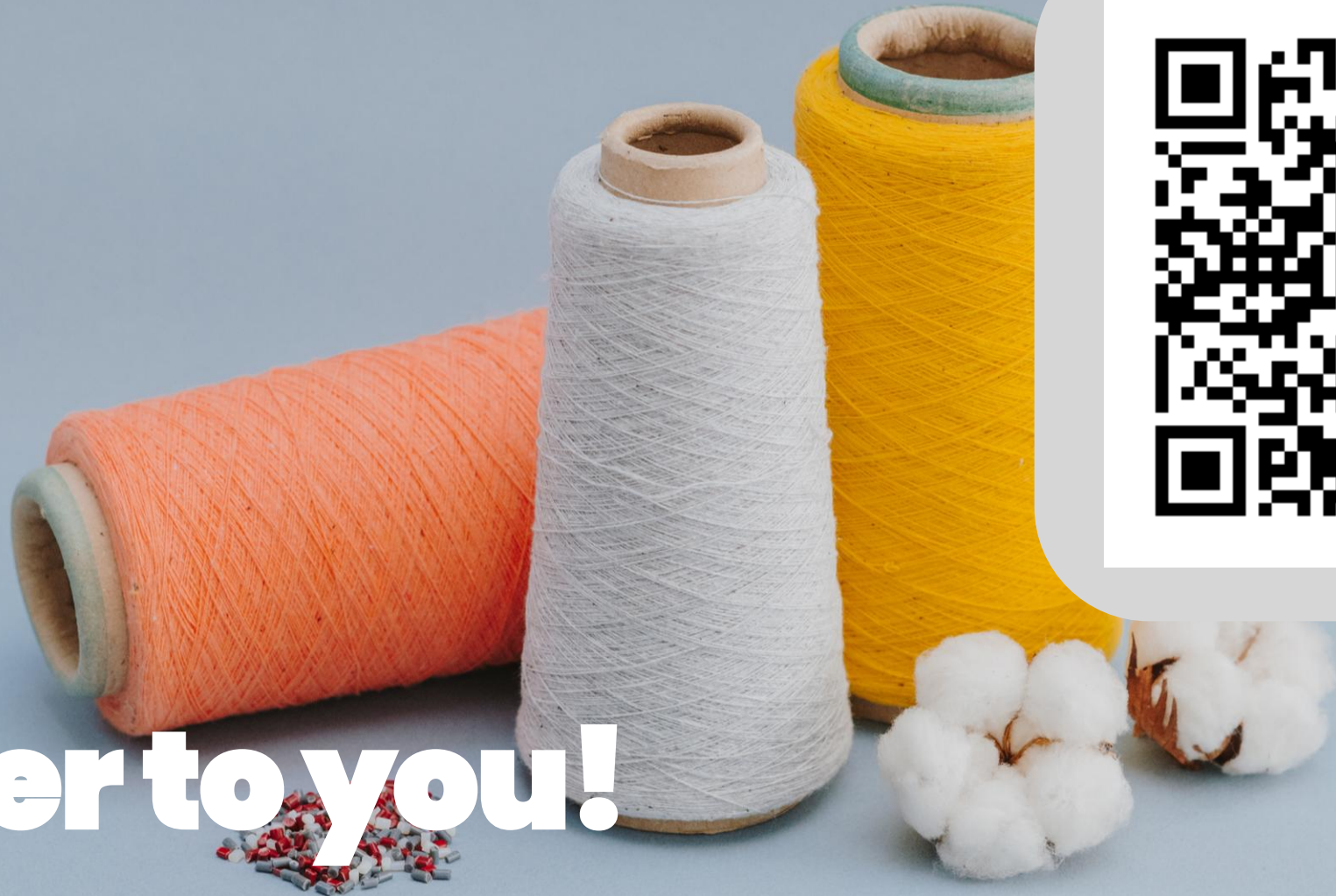


Proof of manufacture of a product containing at least 10% recycled materials

Questions & Answers

#5





Over to you!

Ask your questions in the Q&A section

Re_fashion

Changeons notre mo(n)de, durablement.